

Chautauqua Memories

SUNDAY EXCURSION

TO THE

Chautaugua
Cold Stream Lake
ENFIELD, MAINE
Sunday, Aug. 4

RATES

BANGOR AND RETURN	\$1.20
Orono and Return	.94
Great Works "	.87
Old Town "	.80
Millford "	.64
Greenbush "	.50
Olamon "	.47
Passadumkeag "	.20



Prof. P. P. BILHORN

**WILL SING
DAILY**

Train will leave Bangor at 7.30 A. M.
Stopping at way stations

Returning, leave Enfield at 5.0'clock P. M.

Conveyance to Ground by Team, Auto or Motor Boat
ROUND TRIP 50 CENTS

The Lake is one mile from Station. Motor Boat sails up Lake to Ground.

MEETING HOLDS TEN DAYS

Board and Room \$5.00 per week



The Chautauqua house located on the Davis Road has a history ranging from activities of only a single family to those of a nation-wide organization. The name Chautauqua comes from a group started in 1852 in New York state to provide classes for Sunday School teachers. It expanded to include a traveling circuit of lectures, concerts and plays that were given in tents throughout the U.S. It was this branch which visited the shores of Cold Stream Pond from approximately 1910 until the late 1920s.

The camp was built by preacher Fred McNeal and his parish from Mattawamkeag. Parish members were assigned 14'x14' tent sites in the woods behind the building. Visiting evangelists, including Reverend A.A. Welch and Professor P.P. Bilhorn, provided services and entertainment for anyone interested in attending (handbill to left advertises one such session). Guests were brought up the lake from the landing in a 60' steamboat which was tied up at the long rock-filled pier at the camp. The sessions were held in public areas among the tent sites with gaily colored Japanese lanterns strung from the main camp up to the sites. The main camp was used to house the visiting entertainers and for services during inclement weather while meals were prepared at a smaller camp built on an adjoining lot. Food was delivered daily from the local Laing General Store; Carl Laing remembers attending one of the services as a child accompanied by his Aunt Hattie Bordwell.

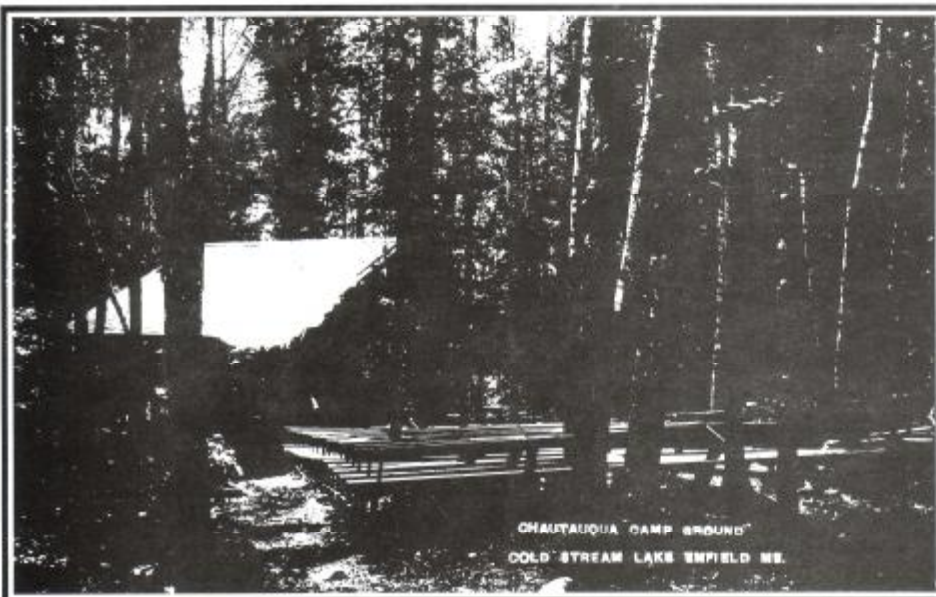
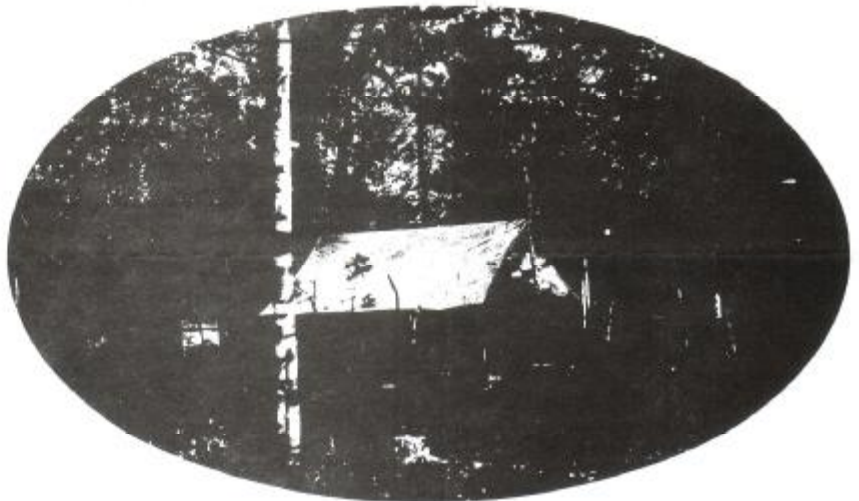
In early 1950, the main camp was purchased by Dr. Freeman Hussey, an Old Town dentist and his wife, Ruby. The Hussey's added the boat house; their children held weekly dances on its roof during the summer. Their son, John, was an avid water skier and often invited his friends from the Bangor Water Ski Club to perform here on Cold Stream.

The smaller cook house and ice house were purchased by Mr. Graham and later passed to his daughter, Priscilla Carney.



FROM CHAUTAUQUA HOUSE PLAZA
COLD STREAM LAKE ENFIELD ME.

Today, the properties are again joined under one owner, Grover and Jeanne Reed of Enfield. The camps stand much as they were during the Chautauqua era, but the steamboat pier is marked only by a long line of underwater rocks and the individual tent sites have long since disappeared with only an occasional piece of slate seating to tell the story of what once was.



CHAUTAUQUA CAMP GROUND
COLD STREAM LAKE ENFIELD ME.

Thanks to Carl and Hattie Laing of Enfield and Ruby Hussey of Old Orchard Beach for their Chautauqua memories.